

PHOTO-TOP TECHNOLOGIES CO.,LTD. AUTOMOTIVE RELAY

2023 PRODUCT LIST



PHOTO-TOP TECHNOLOGIES CO., LTD.

NO.57.LANE 458,SEC 4,ZHONGHUA RD, XIANGSHAN DIST.

HSINCHU CITY 30060, TAIWAN , R.O.C

TEL: +886 3 5396811 FAX: +886 3 5381793

WWW.PHOTO-TOP.COM.TW



website



Amazon



Taiwantrade



Facebook



**Photo - Top
Technologies Co.,Ltd.**



Photo-Top Technologies is a company specializing in all kinds of auto parts and high-quality products. It can be provided the Top products and the professional technologies to achieve the achievements of customers

Photo-Top Technologies to be established in 2001, it is focus on creating and developing all kinds of auto parts accessories and power protection device .

After the hard working many years , It provide the high-quality products in the automotive industry and got the confidence / responsibility from the customers.

We believe that the core value of our company is to solve and satisfy the customer's issues and request.

Photo-Top Technologies can provide you with the service goals of product diversification, market segmentation and a small amount of variety, providing customers with one-stop shopping services, reducing procurement search costs, and also providing customers with OEM and ODM business services to meet your demand.

Table of Contents

Brand Story	1
Product Description	2
Application Of Relay	3
Features of Relay	3
High Current Relay	4
SCB RELAY	4
MINI RELAY	4
Automotive 5-Pin Relay	5
4-Pin Multipurpose Relay	5
Solenoid Starter Switch	5

Product Description

Circuit Breakers



Overload protection: Circuit breakers are designed to automatically interrupt an electrical circuit when they detect an overload, protecting against electrical hazards and damage to equipment.

Short-circuit protection: Circuit breakers also protect against short-circuits by automatically interrupting the flow of electricity when they detect a fault in the circuit.

Resettable: Most circuit breakers can be easily reset after they trip, allowing for quick and convenient restoration of power.

Automotive fuse



Fuses come in different shapes, sizes, and amperage ratings to match the specific needs of the electrical system in a car.

They are typically made of a metal wire or filament that melts when too much current flows through it, interrupting the flow of electricity and preventing damage to the vehicle's electrical components.

Fuse Holder



Fuse holders come in different types, including blade fuse holders, mini fuse holders, and maxi fuse holders, to match the different sizes and types of fuses used in a vehicle.

They are typically made of a durable, heat-resistant material such as plastic or metal and are designed to securely hold the fuse in place, while providing easy access for maintenance and replacement.

Battery Terminals



Battery terminals come in two main types: positive and negative. The positive terminal is usually marked with a "+" symbol, while the negative terminal is marked with a "-" symbol. Both terminals are usually made of brass or other conductive materials and are designed to fit snugly onto the battery posts.

Battery terminals may also include a terminal cover, which is a protective cover that fits over the terminals to prevent accidental contact and provide additional protection from environmental factors such as moisture, dirt, and corrosion.

Battery Connector



Battery connectors come in different types, including clamp connectors, eyelet connectors, and plug-and-socket connectors.

Clamp connectors, also known as battery clamps, are the most common type of battery connector and are used to secure the battery cable to the battery post. They consist of a metal clamp that fits over the battery post and a screw or bolt that tightens down to secure the cable in place.

Relay



Relays are used in cars because they allow the control of high-power circuits with a low-power signal, typically from a switch or control module.

This helps to reduce the size and weight of the wiring and switches in a vehicle, and also helps to protect the electrical system by isolating the high-power circuit from the control circuit.

Battery Accessories



Car battery accessories are a group of components and devices that are used to support the operation and maintenance of a car's battery.

These accessories are designed to enhance the performance, efficiency, and longevity of the battery, as well as to provide safety and protection for both the battery and the vehicle.

The image shows a screenshot of the Photo-Top Technologies Co., Ltd. website. The website has a navigation bar with links for Home, Product, About Us, and a partially visible link. The main content area features a large image of a car driving on a road, with the text 'PHOTO-TOP TECHNOLOGIES CO., Ltd.' and the tagline 'Make your driving more comfortable'. A red button labeled 'Show our product' is visible at the bottom left. A magnifying glass is positioned over the 'Product Catalog' link in the navigation bar. To the right of the magnifying glass, a black box contains the text 'Click here to download the catalog'.

Application Of Relay

Relays can be used in various applications, including:

Electric power control: relays can be used to control the power supply to electric motors, lighting systems, and other high-power devices.

Automotive industry: relays are used in cars and other vehicles to control the ignition system, fuel pump, headlights, and other electrical systems.

Industrial automation: relays are commonly used in factories and other industrial settings to control machinery and other equipment.

Home automation: relays can be used in home automation systems to control lighting, heating, and other household appliances.

Telecommunications: relays are used in telephone exchanges to route calls and other signals to their destinations.

Security systems: relays can be used in security systems to trigger alarms, control access to buildings, and perform other security-related functions.



Features of Relay

Switching capability:

Relays are designed to switch or control the flow of electrical current or signal to a specific device or system.

Contact configuration:

Relays have various contact configurations, including normally open (NO), normally closed (NC), and changeover (CO) contacts.

Contact rating:

Relays have different contact ratings that specify the maximum voltage and current that they can handle safely.

Coil voltage rating:

Relays require a specific voltage to activate the coil and operate the switch contacts.

Response time:

Relays have a response time, which is the time it takes for the switch contacts to close or open after the coil is energized or de-energized.

Physical design:

Relays come in different sizes and shapes and can be designed for various mounting methods, including PCB mounting and panel mounting.

Relay

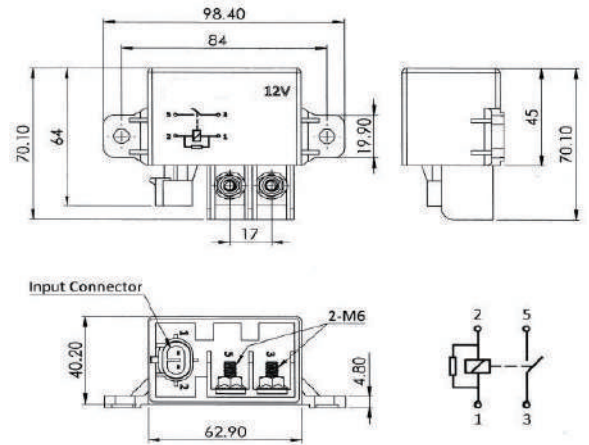
1



High Current Relay

P004-201-0001

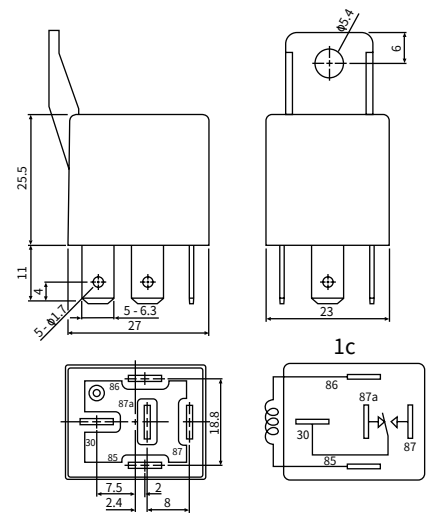
- *Rated Voltage : 12Vdc
- *Rated Current : 150A
- *Ambient Temperature : -40 ° C ~ +125° C
- *Operation Voltage : ≤ 8Vdc(23° C)
- *Release Voltage : ≥ 1.2Vdc(23° C)
- Voltage : ≤ 8Vdc(23° C)



SCB RELAY

P004-201-0002

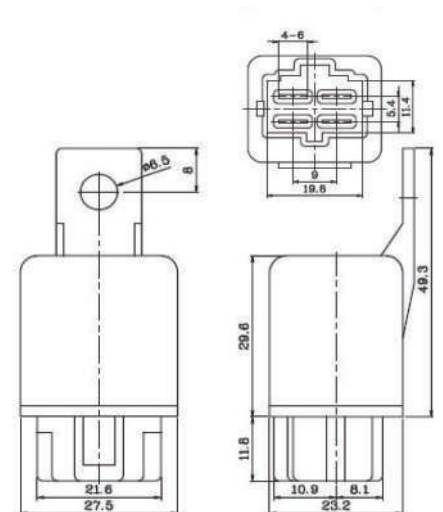
- *Normal voltage : 12VDC
- *Coil resistance : $103 \pm 10.3\Omega$ at 20° C
- *Operate voltage : 7.8VDC at 20° C
- *Release voltage : 1.2VDC at 20° C
- *Insulation resistance : 50M Ω Min. (500VDC)



MINI RELAY

P004-201-0003

- *Size: 27.5x 23.2x 49.3.
- *Multiple choices for cover type.
- *Contact rated load up to 30A / 12VDC.
- *Application for air condition control, halogen head lamp control horn control, fog lamp control, etc.
- *RoHS 2011/65/EU compliant.



Relay

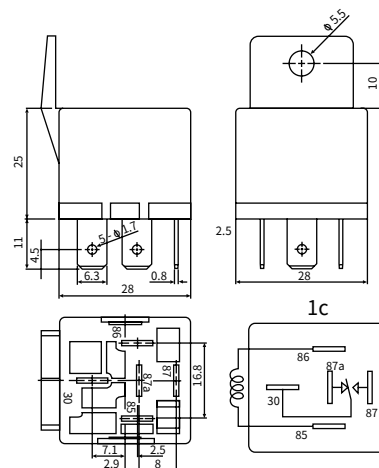
2



Automotive 5-Pin Relay

P004-201-0004

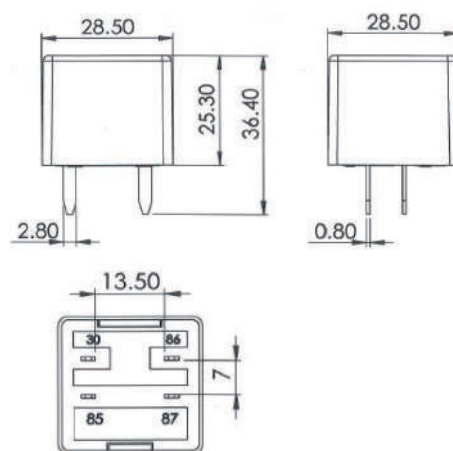
- *Coil voltage : 12VDC
- *Coil Resistance : 90Ω
- *Contact current DC, A : 40A
- *Contact configuration : SPDT
- *Mounting type : Bracket Cover



4-Pin Multipurpose Relay

P004-201-0005

- *Rated Voltage : 12VDC
- *Resistance : 77Ω
- *Contact current : 30A
- *Operating Voltage : $\leq 8VDC$
- *Release Voltage : $\geq 1.2VDC$



Solenoid Starter Switch

P004-201-0006

- *Rated Voltage : 12Vdc
- *Rated Current : 100A
- *Operating Voltage : $\leq 8.4Vdc$
- *Release Voltage : $\geq 1.2Vdc$
- *Operating Temp : $-40^{\circ}C \sim +85^{\circ}C$

