

PHOTO-TOP TECHNOLOGIES CO.,LTD. BATTERY ACCESSORIES

2023 PRODUCT LIST



PHOTO-TOP TECHNOLOGIES CO., LTD.
NO.57.LANE 458,SEC 4,ZHONGHUA RD, XIANGSHAN DIST.
HSINCHU CITY 30060, TAIWAN , R.O.C
TEL: +886 3 5396811 FAX: +886 3 5381793
WWW.PHOTO-TOP.COM.TW



website



Amazon



Taiwantrade



Facebook



**Photo - Top
Technologies Co.,Ltd.**



Photo-Top Technologies is a company specializing in all kinds of auto parts and high-quality products. It can be provided the Top products and the professional technologies to achieve the achievements of customers

Photo-Top Technologies to be established in 2001, it is focus on creating and developing all kinds of auto parts accessories and power protection device . After the hard working many years , It provide the high-quality products in the automotive industry and got the confidence / responsibility from the customers. We believe that the core value of our company is to solve and satisfy the customer's issues and request.

Photo-Top Technologies can provide you with the service goals of product diversification, market segmentation and a small amount of variety, providing customers with one-stop shopping services, reducing procurement search costs, and also providing customers with OEM and ODM business services to meet your demand.

Table of Contents

Brand Story	1	Swan Type Battery Terminal	10
Product Description	3	Theft Battery Master Switch Kit	10
Application Of Battery Accessories	4	Dual Heavy-Duty Terminal Studs	10
Features of Battery Accessories	4	Battery terminal	11
Multi-Connection Battery Terminal	5	Battery Isolation Switch	12
Battery Jumper Terminal & Studs	5	TOGGLE SWITCH	12
Battery feed stud	5	LED TOGGLE SWITCH	13
Remote Battery Terminal Replacement Boot	6	200 Amp Battery Clamp	13
Speed Power terminal	6	PUSH BUTTON SWITCH	13
Remote Battery Jumper Terminal brackets	6	BATTERY SWITCH	14
Battery Stud Terminal block	7	Swan Type Battery Terminal	16
Battery Terminal Stud	7	Heavy Duty Axle Switch	16
BATTERY SWITCH	7	INSULATED NUT	16
Dual Heavy-Duty Terminal Studs	9	SPST Single Pole Metal Body Battery Switches ..	17
Security Flip Cover	9	Face Plate-SWITCH BATTERY	17
BATTERY SWITCH	9	SWITCH DISCONNECT BATTERY	17

SWITCH BATTERY DISCONNECT	18	Large Battery Tray	21
PANEL START IGNITION	18	Rock switch with 3 colors of logo	21
Lockout Lever Battery Disconnect Switch	18	Mmounting Plate	22
Door Push-Button Switches	19	Actuator Removal Tool	22
Lock-out Lever Kit	19	Rotary Reversing Switches	22
Battery Main Switch (On-Off)	19	LOCK OUT LEVER KIT	23
Battery Main Switch (On-Off with AFD)	20	Bolt on Fuse-Mega Fuse	23
Battery Selector Switch (1-2-Both-Off)	20	SWITCH BATTERY DISCONNECT	24
Battery Selector Switch (1-2-Both-Off with AFD)	20	Vehicle Battery Terminal Connector	24
Battery terminal	21		

Product Description

Circuit Breakers



Overload protection: Circuit breakers are designed to automatically interrupt an electrical circuit when they detect an overload, protecting against electrical hazards and damage to equipment.

Short-circuit protection: Circuit breakers also protect against short-circuits by automatically interrupting the flow of electricity when they detect a fault in the circuit.

Resettable: Most circuit breakers can be easily reset after they trip, allowing for quick and convenient restoration of power.

Automotive fuse



Fuses come in different shapes, sizes, and amperage ratings to match the specific needs of the electrical system in a car.

They are typically made of a metal wire or filament that melts when too much current flows through it, interrupting the flow of electricity and preventing damage to the vehicle's electrical components.

Fuse Holder



Fuse holders come in different types, including blade fuse holders, mini fuse holders, and maxi fuse holders, to match the different sizes and types of fuses used in a vehicle.

They are typically made of a durable, heat-resistant material such as plastic or metal and are designed to securely hold the fuse in place, while providing easy access for maintenance and replacement.

Battery Terminals



Battery terminals come in two main types: positive and negative. The positive terminal is usually marked with a "+" symbol, while the negative terminal is marked with a "-" symbol. Both terminals are usually made of brass or other conductive materials and are designed to fit snugly onto the battery posts.

Battery terminals may also include a terminal cover, which is a protective cover that fits over the terminals to prevent accidental contact and provide additional protection from environmental factors such as moisture, dirt, and corrosion.

Battery Connector



Battery connectors come in different types, including clamp connectors, eyelet connectors, and plug-and-socket connectors.

Clamp connectors, also known as battery clamps, are the most common type of battery connector and are used to secure the battery cable to the battery post. They consist of a metal clamp that fits over the battery post and a screw or bolt that tightens down to secure the cable in place.

Relay



Relays are used in cars because they allow the control of high-power circuits with a low-power signal, typically from a switch or control module.

This helps to reduce the size and weight of the wiring and switches in a vehicle, and also helps to protect the electrical system by isolating the high-power circuit from the control circuit.

Battery Accessories



Car battery accessories are a group of components and devices that are used to support the operation and maintenance of a car's battery.

These accessories are designed to enhance the performance, efficiency, and longevity of the battery, as well as to provide safety and protection for both the battery and the vehicle.

PHOTO-TOP TECHNOLOGIES CO., Ltd.
Make your driving more comfortable

Product Catalog

Click here to download the catalog

Show our product

Application Of Battery Accessories

Battery accessories can be used in a variety of applications, including:

Automotive: Battery accessories such as battery cables, terminals, and connectors are commonly used in the automotive industry to connect the battery to the vehicle's electrical system.

Marine: Battery accessories are also used in the marine industry for connecting and managing batteries on boats and ships.

Renewable Energy: Battery accessories such as charge controllers and inverters are used in renewable energy systems to manage and convert the energy stored in batteries to usable AC power.

Backup Power: Battery accessories can be used in backup power systems, such as uninterruptible power supply (UPS) systems, to ensure continuous power during power outages.

Consumer Electronics: Battery accessories such as battery cases, chargers, and adapters are commonly used in consumer electronics such as smartphones, tablets, and laptops to provide power and extend battery life.



Features of Battery Accessories

Durability:

Battery accessories are typically made of materials that are durable and able to withstand exposure to harsh environments, such as extreme temperatures, moisture, and chemicals.

Corrosion resistance:

Many battery accessories, such as terminals and connectors, are designed to resist corrosion from exposure to the battery's electrolyte or other corrosive substances.

High conductivity:

Battery accessories that are used for conducting electrical current, such as cables and connectors, are designed to have high conductivity to minimize electrical resistance and power loss.

Easy installation:

Battery accessories are often designed to be easy to install, with features such as color-coded wires, intuitive connectors, and clear instructions.

Safety:

Battery accessories should be designed with safety in mind, including features such as built-in fuses, circuit breakers, and over-current protection.

Compatibility:

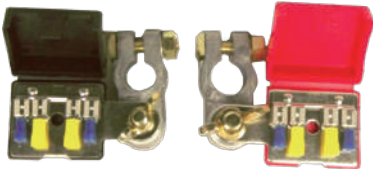
Battery accessories should be compatible with the type of battery they are designed to work with, such as lead-acid, lithium-ion, or nickel-metal hydride batteries.

Battery Accessories Series

1

Multi-Connection Battery Terminal

C001-079-0006BK C001-079-0006RD



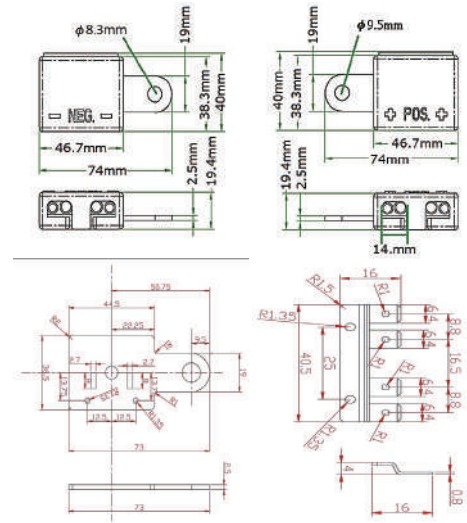
*Used to terminate up to 4 electronic instruments on each set of terminals.

*Can be used as busbar separately and connected to multiple electronics.

*Red and black colors are available for positive and negative connections.

*Does not need screws.

*Cover snaps closed to make sure everything is secure.



Battery Jumper Terminal & Studs

C001-079-0007/8

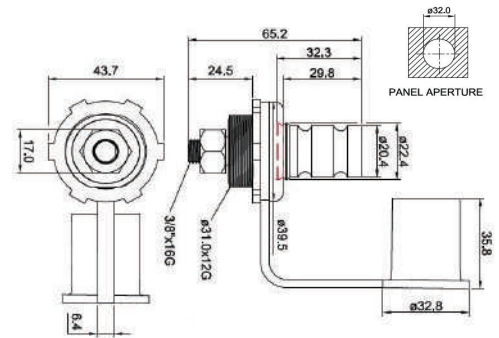


* Battery Jumper Terminal, Red Cap(Positive), Black cap(negative)

*Rating:6-36V DC; Extra Heavy duty

*Terminals: two 3/8"-16 thread brass stud

*Installation: through 1 5/16" diameter hole



Battery feed stud

C001-079-009/10

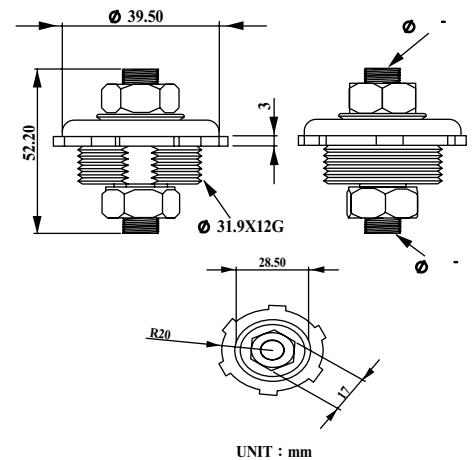


*Battery feed stud,Red Cap(Positive), Black cap(negative)

*Rating:6-36V DC; Extra Heavy duty

*Terminals: two 3/8"-16 thread brass stud

*Installation: through 1 5/16" diameter hole



Battery Accessories Series

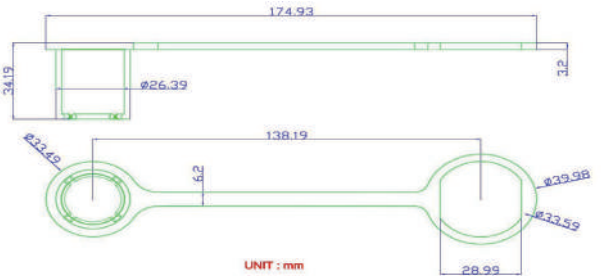
2



Remote Battery Terminal Replacement Boot

C001-079-0011

- *Part Type: Battery Terminal Caps
- *Cap Material: Plastic
- *Cap Finish: Red/Black
- *Description: Replacement Cap



Speed Power terminal

C001-079-0012

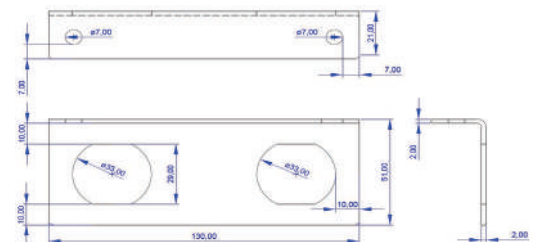
- *Quick Release Battery Terminal Connector Caps
- *Rated Max 500 amps continuous, 800 amps surge
- *Steel terminals inside/copper plated
- *Attach to Battery Terminal by Clamping Down on Cap
- *Color coded Caps: Red positive, blue negative



Remote Battery Jumper Terminal brackets

C001-079-0013

- *Bracket Material: Stainless
- *130mm Wide x 51mm High x 2mm Thick Stainless
- *Applications: 6-36 Volt DC
- *Radiused edges for a smooth finish



Battery Accessories Series

3

Battery Stud Terminal block

C001-079-0023



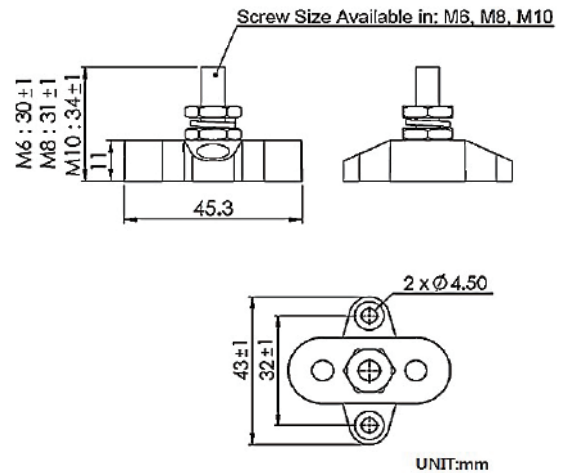
*Allow terminating of heavy-duty cables for one or more connections

*Red or Black color allowing easy and clear color coding for wiring

*Glass Fiber reinforced Nylon base ensures great mechanical strength and durability

*Max Operating Voltage DC 48V

*Max Amp per circuit Determined by wires connected



Battery Terminal Stud

C001-079-0024



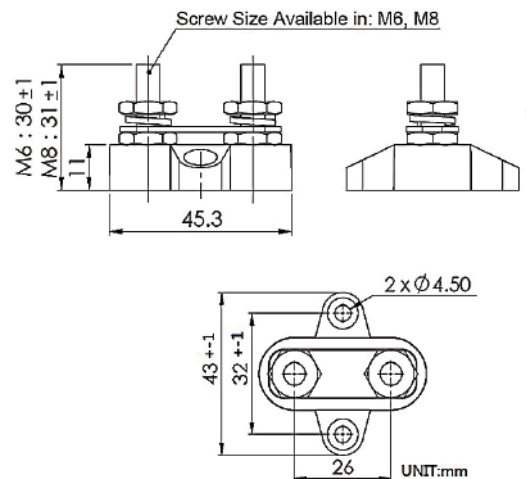
*Allow terminating of heavy-duty cables for one or more connections

*Red or Black color allowing easy and clear color coding for wiring

*Glass Fiber reinforced Nylon base ensures great mechanical strength and durability

*Max Operating Voltage DC 48V

*Max Amp per circuit Determined by wires connected



BATTERY SWITCH

C001-079-0025



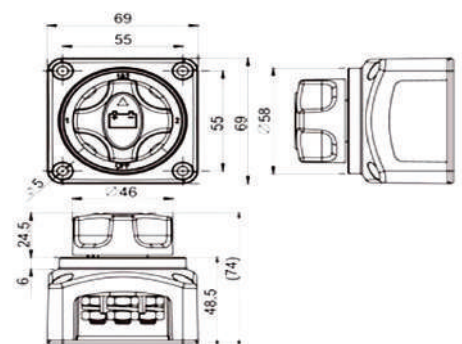
*MATERIAL: Frame is PBT (UL frame: 94V-0)with black color.

*Actuator: PBT (UL frame: 94HB)with red color.

*Wire screw for connection:copper tinned 3 pcs.

*Wire nut for connection: copper tinned 6 pcs.

*Wire outlet direction: any of 4 directions.



Battery Accessories Series

4



BATTERY SWITCH

C001-079-0026

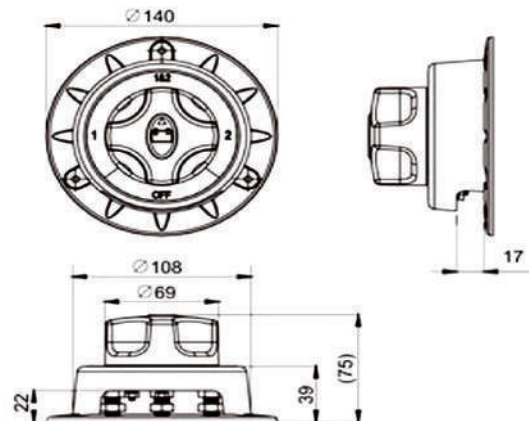
*MATERIAL: Frame is PBT (UL frame: 94V-0)with black color.

*Actuator: PBT (UL frame: 94V-0)with red color.

*Wire screw for connection: bronze 3 pcs+sensor 2 pcs.

*Wire nut for connection: bronze 4 pcs+sensor 4 pcs.

*Wire outlet direction: single outlet, downside. Battery shut down sensor.



BATTERY SWITCH

C001-079-0027

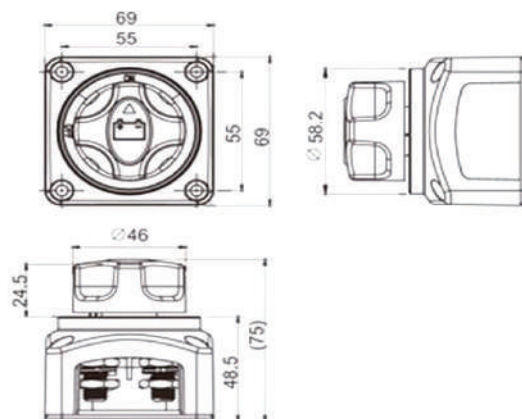
*MATERIAL: Frame is PBT (UL frame: 94V-0)with black color.

*Actuator: PBT (UL frame: 94V-0)with red color.

*Wire screw for connection:copper tinned 2 pcs.

*Wire nut for connection: bronze tinned 4 pcs.

*Wire outlet direction: any of 4 directions.



BATTERY SWITCH

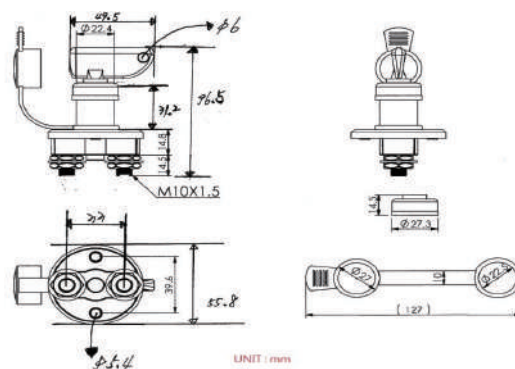
C001-079-0028

*instantaneous 500Amps@12Volts DC

*nominal load 350Amps@12Volts DC

*Wire screw for connection: 2 pcs screws.

*Wire nut for connection: 4 pcs nuts.



Battery Accessories Series

5



Dual Heavy-Duty Terminal Studs

C001-079-0029

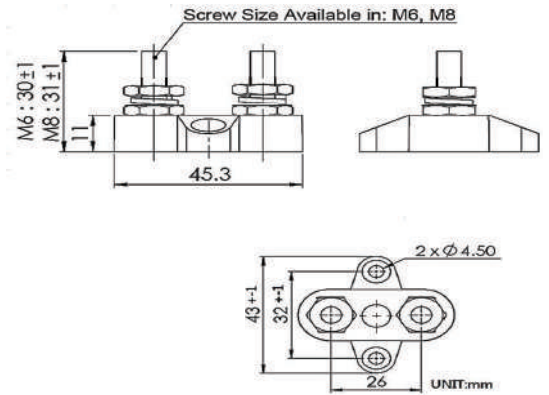
*Allow terminating of heavy-duty cables for one or more connections

*Red or Black color allowing easy and clear color coding for wiring

*Glass Fiber reinforced Nylon base ensures great mechanical strength and durability

*Max Operating Voltage DC 48V

*Max Amp per circuit Determined by wires connected



Security Flip Cover

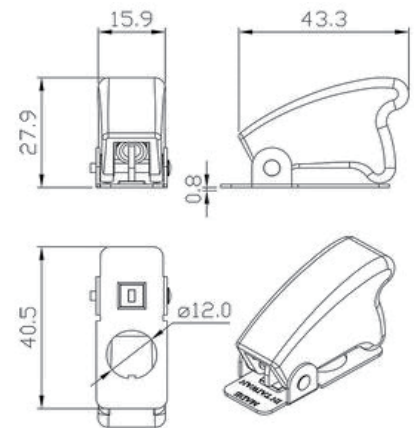
C001-079-0030

*Length: 40.5 x 15.9 x 27.9 mm (LxWxH)

*The diameter of screw hole: 12mm

*Color: Red

*Material: Plastic metal



BATTERY SWITCH

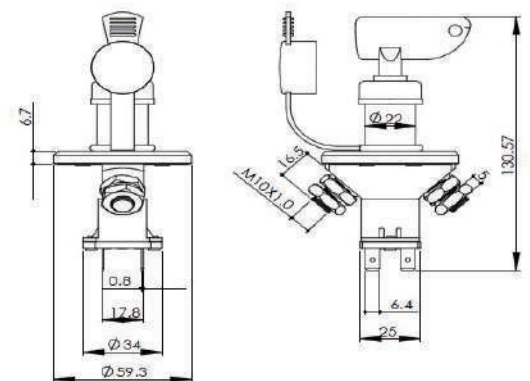
C001-079-0031

*Nominal operating voltage: 12V/24V

*Max. continuous operating current: 150A @ 24V

*Overall height (inc. key): 130.57mm

*6.4mm terminals current rating: 5A



Battery Accessories Series

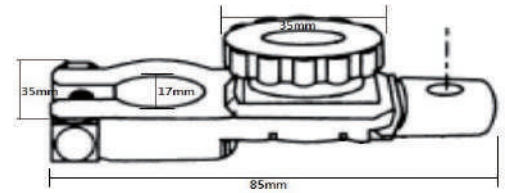
6

Swan Type Battery Terminal

C001-079-0032



- *Top post battery disconnect switch
- *Material: zinc alloy , Finish: copper-plated
- *Fits 6, 12 or 24V top post batteries
- *Switch off power with the turn of green knob
- *Remove knob for anti-theft function

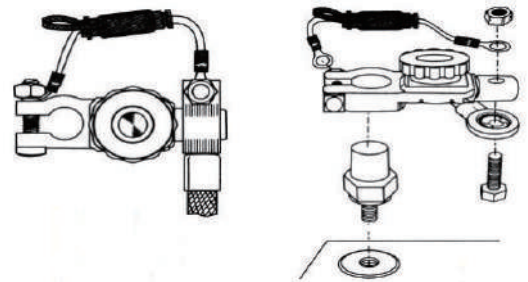


Theft Battery Master Switch Kit

C001-079-0033



- *It is a anti-theft master switch
- *Used for top post batteries
- *It is complete with ATP fuse holder
- *Contains one ATO-20A fuse
- *It has got ring terminals and stainless steel bolt and wing nut

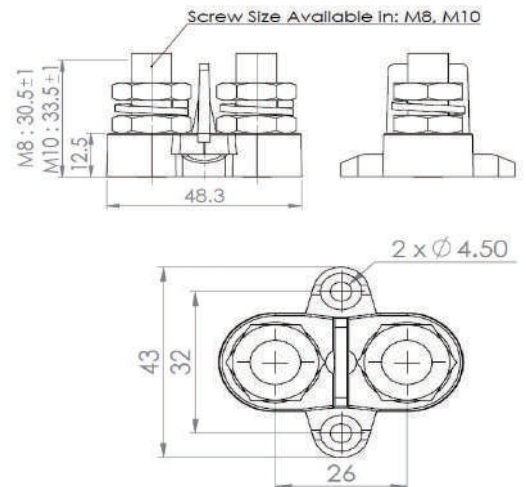


Dual Heavy-Duty Terminal Studs with Isolating Plate

C001-079-0034



- *Allow terminating of heavy-duty cables for one or more connections
- *Red or Black color allowing easy and clear color coding for wiring
- *Glass Fiber reinforced Nylon base ensures great mechanical strength and durability
- *Max Operating Voltage DC 48V
- *Max Amp per circuit Determined by wires connected



Battery Accessories Series

7



Battery terminal

C001-079-0035

*(1)- 5/16" Wing Nut

*Terminal: brass

*Screw: (steel, Ni plated), (brass), (Stainless)

*Approval: RoHS



Battery terminal

C001-079-0036

*(1)- 4 Awg

*Terminal: brass

*Screw: (steel, Ni plated), (brass), (Stainless)

*Approval: RoHS



Battery terminal

C001-079-0037

*(1) - 4 AWG , (2)- 8 AWG

*Terminal: brass

*Screw: (steel, Ni plated), (brass), (Stainless)

*Approval: RoHS



Battery terminal

C001-079-0038

*(1)- 3/8" Wing Nut

*Terminal: brass

*Screw: (steel, Ni plated), (brass), (Stainless)

*Approval: RoHS

Battery Accessories Series

8



Battery terminal

C001-079-0039

* (1)- 0 AWG

* Terminal: brass

* Screw: (steel, Ni plated), (brass), (Stainless)

* Approval: RoHS



Battery terminal

C001-079-0040

* (1)- 0 AWG , (2) - 8 AWG

* Terminal: brass

* Screw: (steel, Ni plated), (brass), (Stainless)

* Approval: RoHS



Battery Isolation Switch

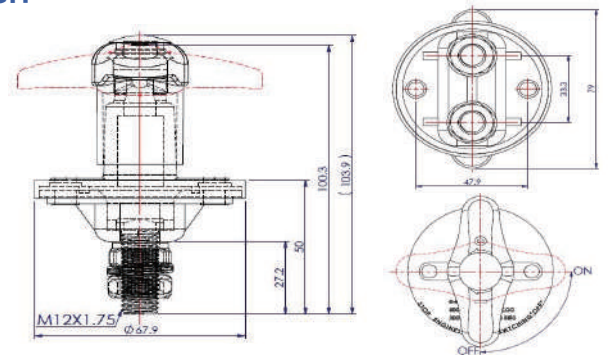
C001-079-0041

* Total Height: ON - 100.3mm

* Total Height: OFF - 103.9mm

* Rating: 12V-24V 500Amps

* Rating: 12V-24V 2000Amps(10 Seconds)



TOGGLE SWITCH

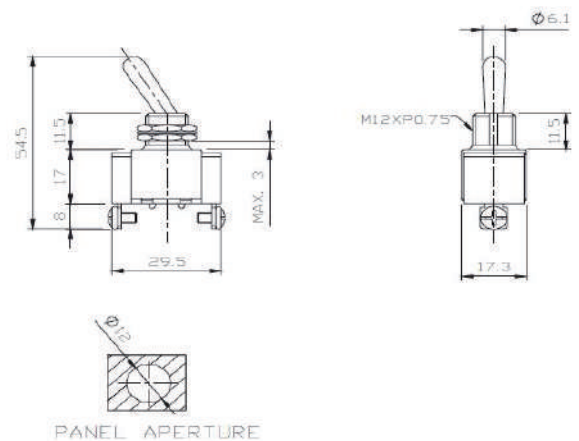
C001-079-0042

* Momentary On-Off 12V 20Amps

* 2 Screw Terminals

* Mounting Stem 15/32" Diameter

* 15/32" Long



Battery Accessories Series

10



BATTERY SWITCH

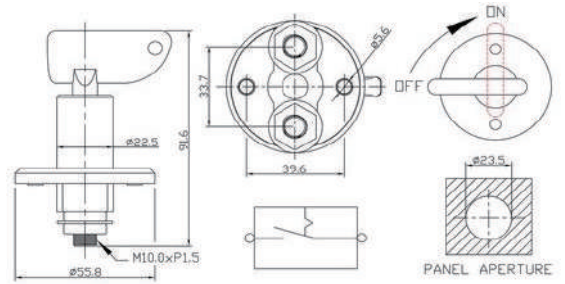
C001-079-0046

*instantaneous 500Amps@12Volts DC

*nominal load 350Amps@12Volts DC

*Wire screw for connection: 2 pcs screws.

*Wire nut for connection: 4 pcs nuts.



BATTERY SWITCH

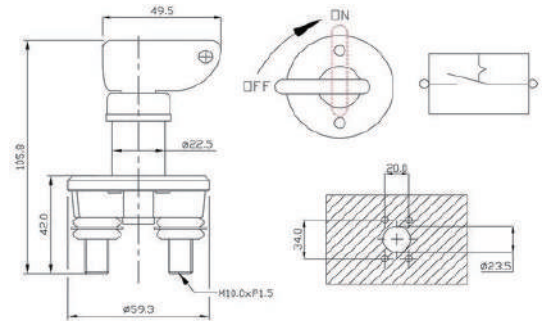
C001-079-0047

*instantaneous 500Amps@12Volts DC

*nominal load 350Amps@12Volts DC

*Wire screw for connection: 2 pcs screws.

*Wire nut for connection: 4 pcs nuts.



BATTERY SWITCH

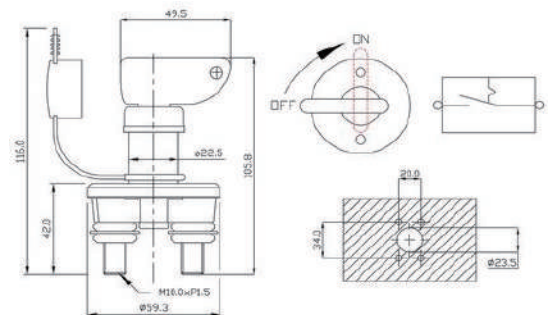
C001-079-0048

*instantaneous 500Amps@12Volts DC

*nominal load 350Amps@12Volts DC

*Wire screw for connection: 2 pcs screws.

*Wire nut for connection: 4 pcs nuts.



Battery Accessories Series

11



BATTERY SWITCH

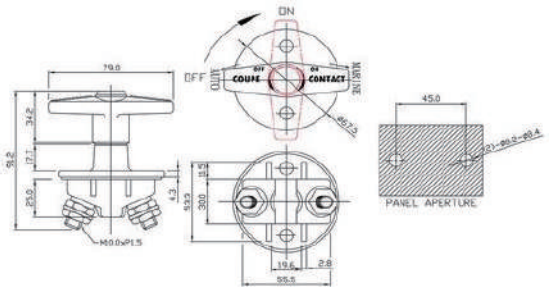
C001-079-0049

*instantaneous 500Amps@12Volts DC

*nominal load 350Amps@12Volts DC

*Wire screw for connection: 2 pcs screws.

*Wire nut for connection: 4 pcs nuts.



BATTERY SWITCH

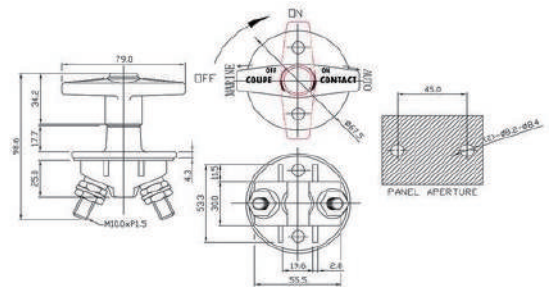
C001-079-0050

*instantaneous 500Amps@12Volts DC

*nominal load 350Amps@12Volts DC

*Wire screw for connection: 2 pcs screws.

*Wire nut for connection: 4 pcs nuts.



BATTERY SWITCH

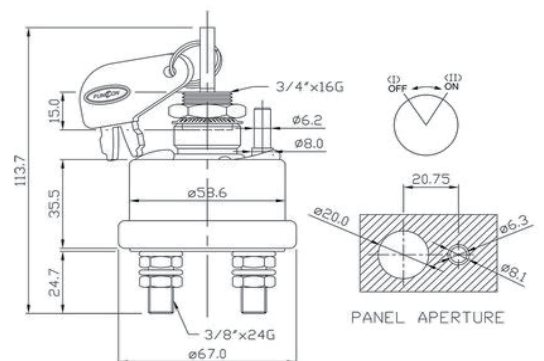
C001-079-0051

*Rating:450Amps 12V Momentary

*250Amps 12V Continual

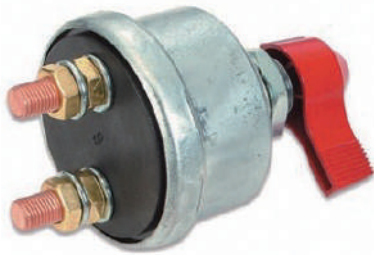
*Wire screw for connection: 2 pcs screws.

*Wire nut for connection: 4 pcs nuts.



Battery Accessories Series

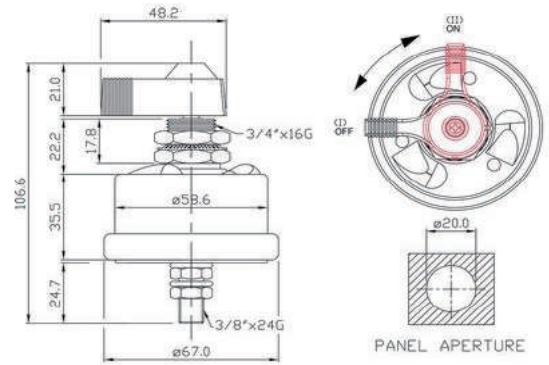
12



BATTERY SWITCH

C001-079-0052

- * Rating: 450 Amps @ 12 Volts DC Momentary
- * 250 Amps @ 12 Volts DC Continual
- * Lever mounting stem 3/4" (19.05m/m) Diameter, 11/16" (17.5m/m) long,
- * two 3/8" (9.52m/m) diameter stud terminal

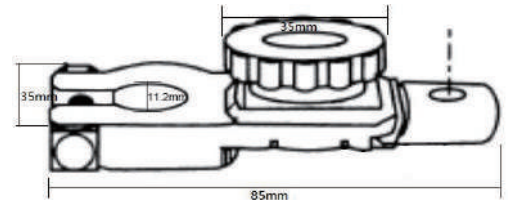


Swan Type Battery Terminal

C001-079-0053



- * Top post battery disconnect switch
- * Material: zinc alloy , Finish: copper plated
- * Fits 6, 12 or 24V top post batteries
- * Switch off power with the turn of green knob
- * Remove knob for anti-theft function

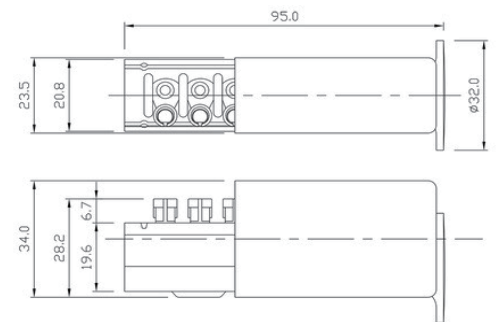


Heavy Duty Axle Switch

C001-079-0054



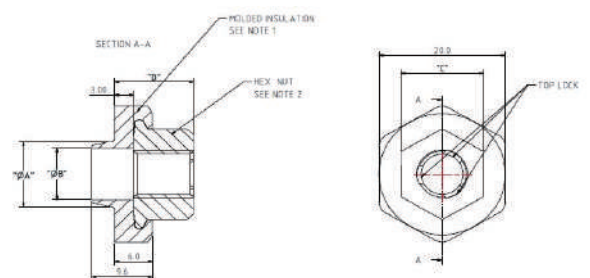
- 2 Speed Heavy Duty Axle Switch
- G. 4560, V.F.L-1451, B-16
- Ford 8 DH-4078, IHC 79348R91,
- Eaton 32861, Chrysler 1390517, 716913, 2510810, 1685883, 227282, 319D5, 9935H, IMR-2101



INSULATED NUT

C001-079-0055

- * M8 INSULATED NUT
- * MOLDED INSULATION: PPS
- * COLOR: BLACK
- * HEX NUT: STEEL , ZINC PLATED



Battery Accessories Series

13



SPST Single Pole Metal Body Battery Disconnect Switches

C001-079-0056

*Can be used with 8V up to 60V DC systems to isolate and secure the electrical system.

*Rated at 1250 Amps momentary @ 12V DC, 200 Amps continuous 12V DC.

*2 Copper Stud terminals for Master Disconnect and individually sealed contacts.

*One piece die-cast housing sealed with O-rings at base and mounting stem protects against dust and moisture.

*Terminal studs: 10mm diameter. with O-rings at base and mounting stem protects against dust and moisture.



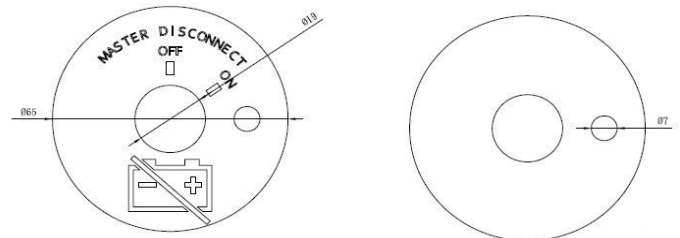
Face Plate-SWITCH BATTERY MASTER DISCONNECT

C001-079-00561

*Material: Aluminum.

*Thickness: 0.8mm.

*Outer diameter: Ø65



SWITCH DISCONNECT BATTERY

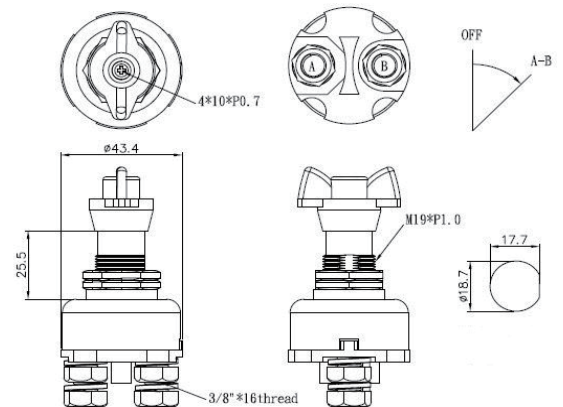
C001-079-0057

*Di-Electric withstanding voltage : 1000V / 1 min.

* Operating voltage range : 12~24VDC

*Duty Rating Continuous : 12V 100Amps

*Intermittent rating : 1000Amps in rush
Continuous : 12V 100Amps



Battery Accessories Series

14



SWITCH BATTERY DISCONNECT

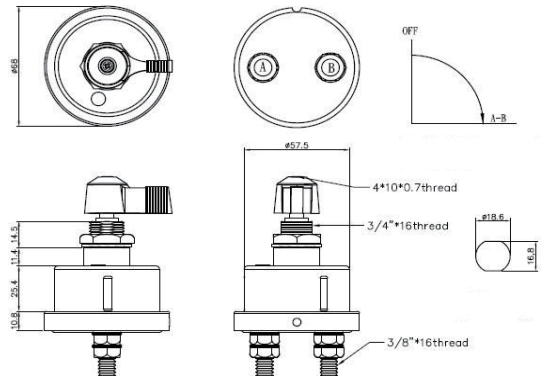
C001-079-0058

*Di-Electric withstanding voltage : 1000V / 1 min.

*Operating voltage range : 6~36VDC

*Duty Rating Continuous : 12V 125Amps

*Intermittent rating : 1000Amps in rush



PANEL START IGNITION

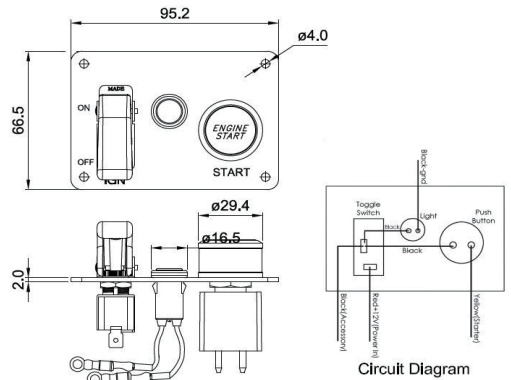
C001-079-0059

*Material: Aluminium alloy and plastic

*Include Pilot Lamp/Toggle Switch/Starter Button Switch

*With Security Flip Cover

*Brass hexnut



Lockout Lever Battery Disconnect Switch

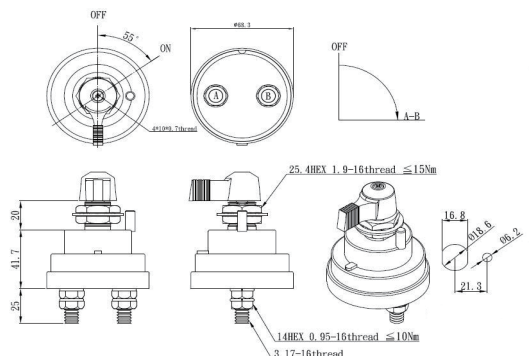
C001-079-0060

*Di-Electric withstanding voltage : 1000V / 1 min.

*Operating voltage range : 6~36VDC

*Duty Rating Continuous : 24V 180Amps

*Intermittent rating : 1000Amps in rush



Battery Accessories Series

15



Door Push-Button Switches

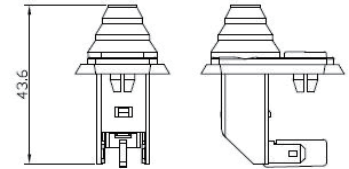
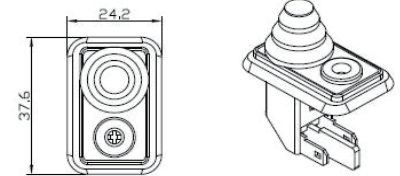
C001-079-0061

Description : Door momentary switch

Terminals : 2 Blade

Sealing : Rubber boot

Details : With boot; this part is obsolete



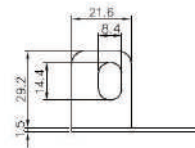
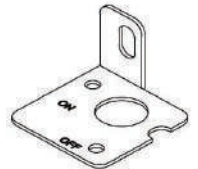
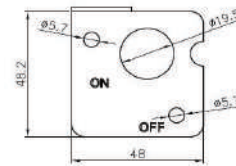
Lock-out Lever Kit

C001-079-0062

Bill of Material :

SL.NO.	Part Name	Material	Unit/PC
1	Iron plate	Iron	1
2	Screw	Iron	2
3	Lever+Drill hole+Vibration	Die-Casting	1

1 Iron plate



Battery Main Switch (On-Off)

C001-079-0063

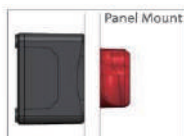
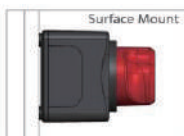
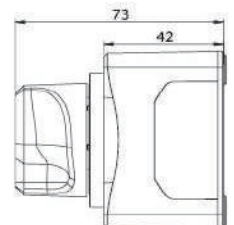
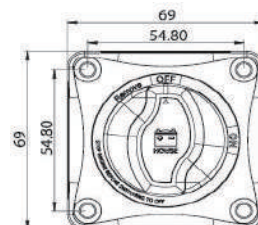
*Cranking Rating(10 Secs)| DC 1250A

*Intermittent Rating(5 mins)| DC 455A

*Continuous Rating| DC 275A

*Voltage Rating| DC 48V Terminal Studs|M10(3/8")

*Meet Ignition Protection Standard (ISO8846 / SAE J1171)



Battery Accessories Series

16



Battery Main Switch (On-Off with AFD)

C001-079-0064

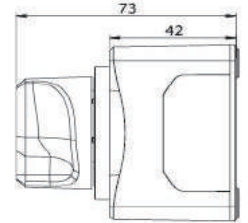
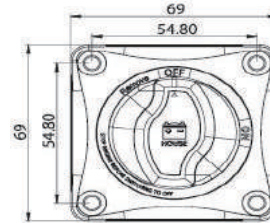
*Cranking Rating(10 Secs)| DC 1250A

*Intermittent Rating(5 mins)| DC 455A

*Continuous Rating| DC 275A

*Voltage Rating| DC 48V Terminal Studs|M10(3/8")

*Meet Ignition Protection Standard (ISO8846 / SAE J1171)



Battery Selector Switch (1-2-Both-Off)

C001-079-0065

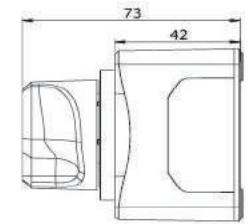
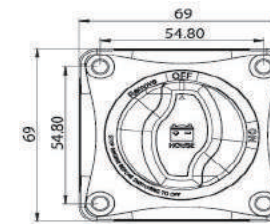
*Cranking Rating(10 Secs)| DC 1000A

*Intermittent Rating(5 mins)| DC 300A

*Continuous Rating| DC 200A

*Voltage Rating| DC 48V Terminal Studs|M8(5/16")

*Meet Ignition Protection Standard (ISO8846 / SAE J1171)



Battery Selector Switch (1-2-Both-Off with AFD)

C001-079-0066

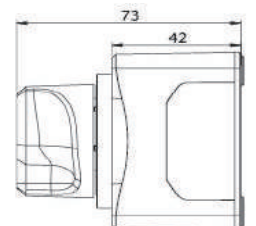
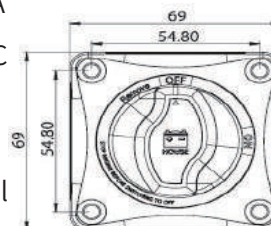
*Cranking Rating(10 Secs)| DC 1000A

*Intermittent Rating(5 mins)| DC 300A

*Continuous Rating| DC 200A

*Voltage Rating| DC 48V Terminal Studs|M8(5/16")

*Meet Ignition Protection Standard (ISO8846 / SAE J1171)



Battery Accessories Series

17



Battery terminal

C001-079-0067

- * (1)- 4 Awg
- * Terminal: brass
- * Screw: (steel, Ni plated), (brass), (Stainless)
- * Approval: RoHS

Specification	For one 4AWG cable
Size	Length : 50mm Width : 45mm Height : 16.2mm
Weight	Positive : 67.5g Negative : 70g



Battery terminal

C001-079-0068

- * (1)- 4 Awg
- * Terminal: brass
- * Screw: (steel, Ni plated), (brass), (Stainless)
- * Approval: RoHS

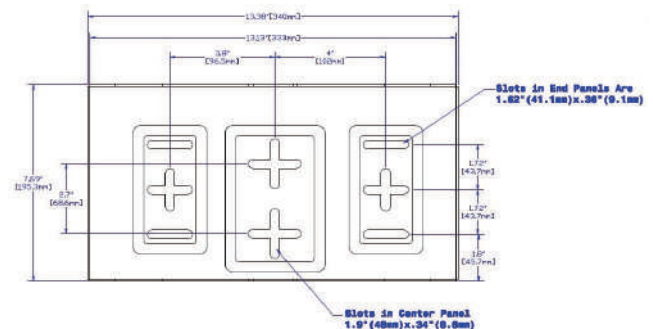
Specification	For one 4AWG cable
Size	Length : 50mm Width : 45mm Height : 16.2mm
Weight	Positive : 67.5g Negative : 70g



Large Battery Tray

C001-079-0070

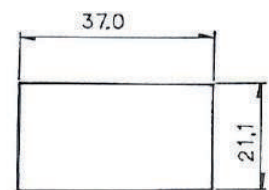
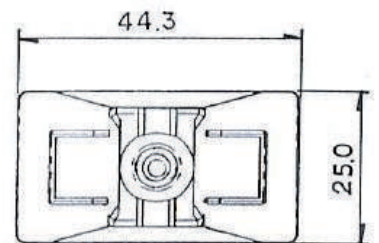
- * 7 inches × 13 inches
- * Vinyl coated
- * Material: steel



Rock switch with 3 colors of logo

C001-079-0071

- * Contact resistance: 20MΩ max. (initial), Insulation resistance: 100MΩ min. (at 500Vdc)
- * Dielectric strength: 1,500VAC 50/60 Hz for 1 minute
- * Service life: Mechanically: 100,000 operations min, Electrically: 30,000 operations min.
- * Rating: 20 A 12 VDC / 15 A 24VDC Mechanically: 100,000 operations min, Electrically: 30,000 operations min.
- * Circuit-Position S.P.D.T, Function: M.ON - OFF - M.ON 12VDC / 15 A 24VDC Mechanically: 100,000 operations min, Electrically: 30,000 operations min.



Panel Cutout

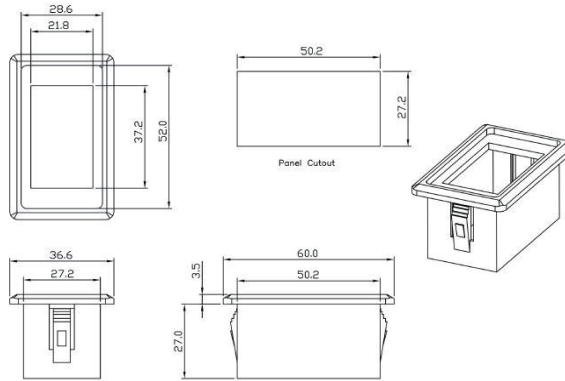
Battery Accessories Series

18



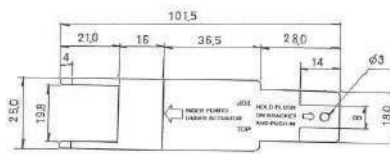
Mounting Plate

C001-079-00711



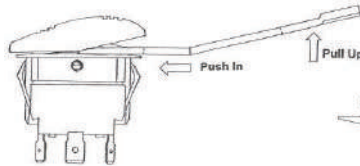
Actuator Removal Tool

C001-079-00714



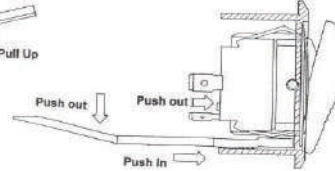
A. REMOVE THE ACTUATOR

- Step 1.) Insert points under actuator and push in.
- Step 2.) Hold the tool and pull up.



B. REMOVE THE SWITCH FROM BRACKET

- Step 1.) Hold flush on bracket and push in.
- Step 2.) Do the same procedure on both sides.

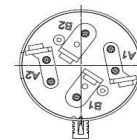
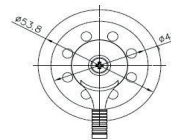


Rotary Reversing Switches

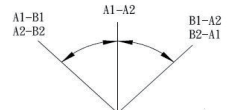
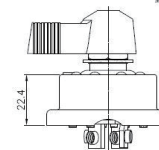
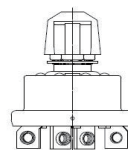
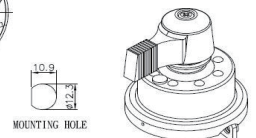
C001-079-0073

* Heavy duty 50A switch

* 2.09" diameter (53.1mm) steel case



Truss head combo 3/16x3/8 zinc plated x4
5mm spring washer zinc plated x4



Battery Accessories Series

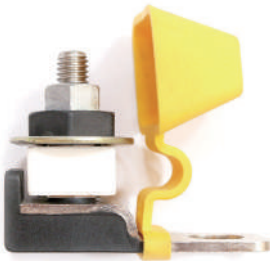
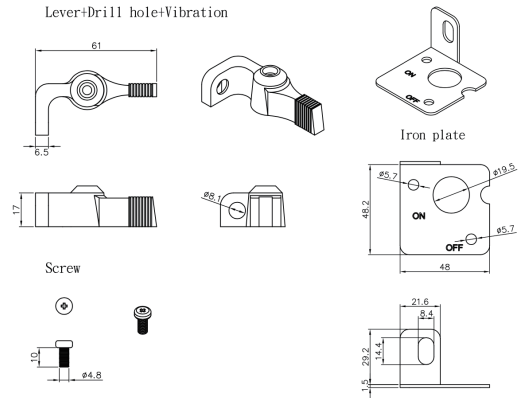
19



LOCK OUT LEVER KIT

C001-079-0077

*ALLOWS SWITCH TO BE LOCKED INTO THE OFF POSITION IN YELLOW



Bolt on Fuse-Mega Fuse

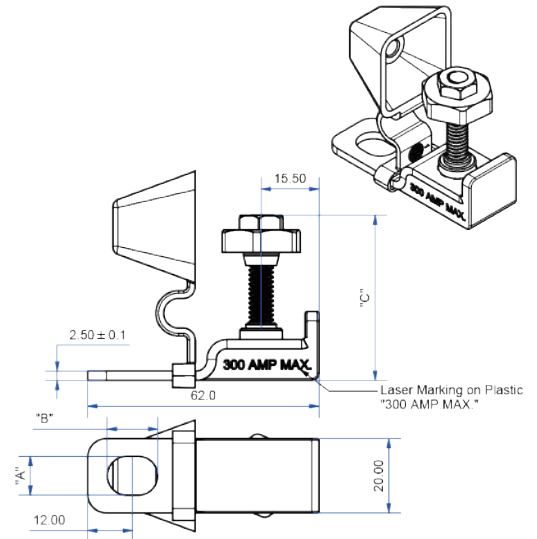
C001-079-0078

* RATINGS: VOLTAGE: 58VDC MAX. AMPERAGE: 300A MAX.

*BFH MATERIAL:
 a. BODY: THERMOPLASTIC PPS UL94-V0, COLOR: BLACK
 b. BUSBAR MATERIAL : COPPER ALLOY (NICKEL PLATING) THICKNESS 2.5mm
 c. STUD MATERIAL: STAINLESS STEEL



*BFH MATERIAL:
 a. NUT-STEEL (ZINC PLATING) , SELF-LOCKING
 b. HOUSING THERMOPLASTIC PPS UL94-V0, COLOR: BLACK



BFC MATERIAL: TPV UL94-HB ; COLOR: YELLOW

MAXIMUM TORQUE: 12N.m(122.4Kgf-cm)

PACKAGE : ALL PARTS ASSEMBLED.
 1 PCS/BAG, 10PCS/INNER BOX,
 100PCS/CARTON

Battery Accessories Series

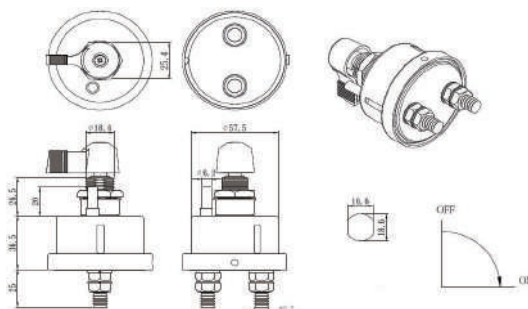
20



SWITCH BATTERY DISCONNECT

C001-079-0085

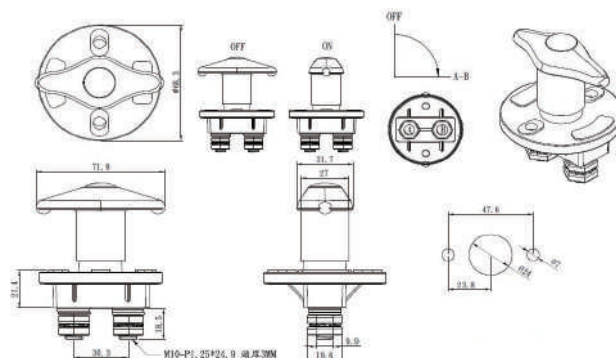
- *Di-Electric withstanding voltage :1000V / 1 min.
- *Operating voltage range:6~36VDC
- *Duty Rating Continuous:24V 300A
- *Intermittent rating:22V 1500A 15seconds



SWITCH BATTERY DISCONNECT

C001-079-0086

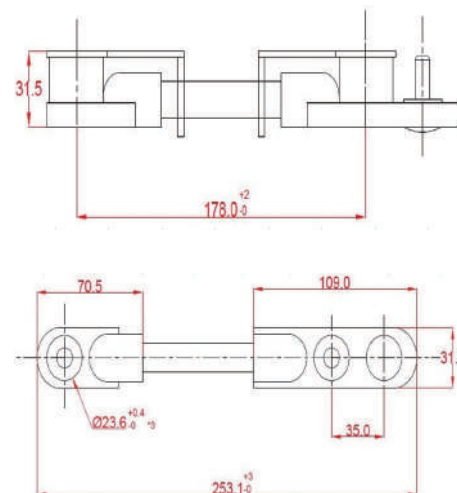
- *24VDC 300 Amps continuous
- *1000Amps/10 sec.
- *Terminal: M10
- *Meet IP 65



Vehicle Battery Terminal Connector By Two Terminals

C001-079-0302

- * Input Rating Voltage: 12VDC ~48VDC
- *Input Rating Current : 220A (normal operation) , 250A max
- *Housing Material : PVC
- *Body Material : Cu + Ni alloy (bare copper twist) with PVC insulating
- * Power Cord Diameter : 61 mm² (wire spec : AWG 0) ~48VDC
- *Polar Color : Positive (+) for Red color , Negative (-) for Black color Current : 220A (normal operation) , 250A max
- *Operating Temperature: -20 °C to +130°C Material : PVC
- * Dimensions (L * W * H) : 253.0*31.5*31.5mm Material : Cu + Ni alloy (bare copper twist) with PVC insulating



Battery Accessories Series

21

Vehicle Battery Terminal Connector By Three Terminals

C001-079-0303



*Input Rating Voltage: 12VDC ~48VDC

*Input Rating Current : 220A (normal operation) , 250A max

*Housing Material : PVC

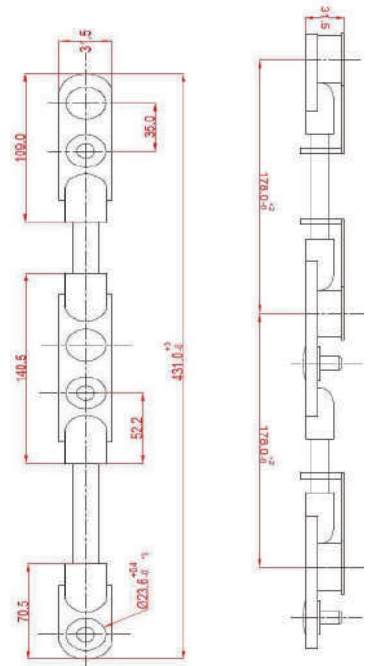
*Body Material : Cu + Ni alloy (bare copper twist) with PVC insulating

*Power Cord Diameter : 61 mm² (wire spec : AWG 0)

*Polar Color : Positive(+) for Red color , Negative (-) for Black color

*Operating Temperature: -20 °C to +130°C

* Dimensions (L * W * H) : 431.0*31.5*31.5mm



Vehicle Battery Terminal Connector By Four Terminals

C001-079-0304



*Input Rating Voltage: 12VDC ~48VDC

*Input Rating Current : 220A (normal operation) , 250A max

*Housing Material : PVC

*Body Material : Cu + Ni alloy (bare copper twist) with PVC insulating

*Power Cord Diameter : 61 mm² (wire spec : AWG 0)

*Polar Color : Positive(+) for Red color , Negative (-) for Black color

*Operating Temperature: -20 °C to +130°C

* Dimensions (L * W * H) : 609.0*31.5*31.5mm

